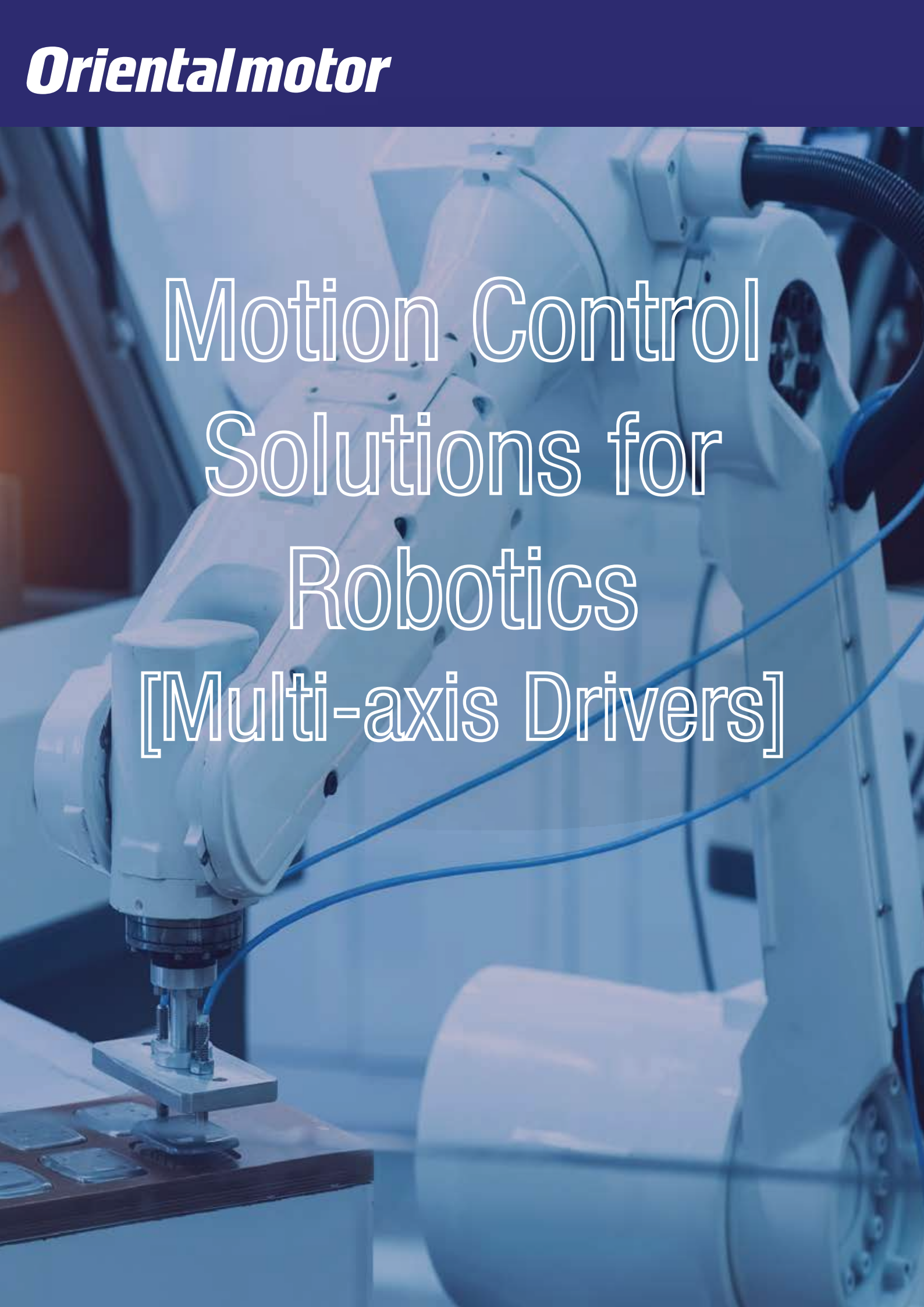


***Orientalmotor***

A white industrial robotic arm is shown in a factory setting, performing a task on a workpiece. The arm is equipped with various cables and sensors. The background is slightly blurred, showing other industrial equipment.

# Motion Control Solutions for Robotics [Multi-axis Drivers]

# Motion System Solution

## Application

A Multi-axis driver (up to 4 axes) allows for multiple motors to be controlled simultaneously, allowing for synchronous performance that increases efficiency and reduces space and

## $\alpha$ STEP AZ Series

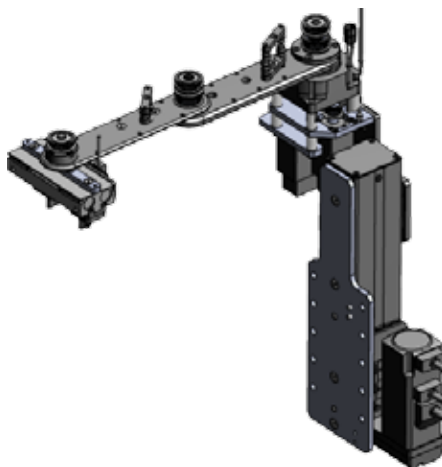
Battery-less Absolute Sensor Equipped



Scan Or Click  
to  
Video  
Example



● Vertical Articulated Robot



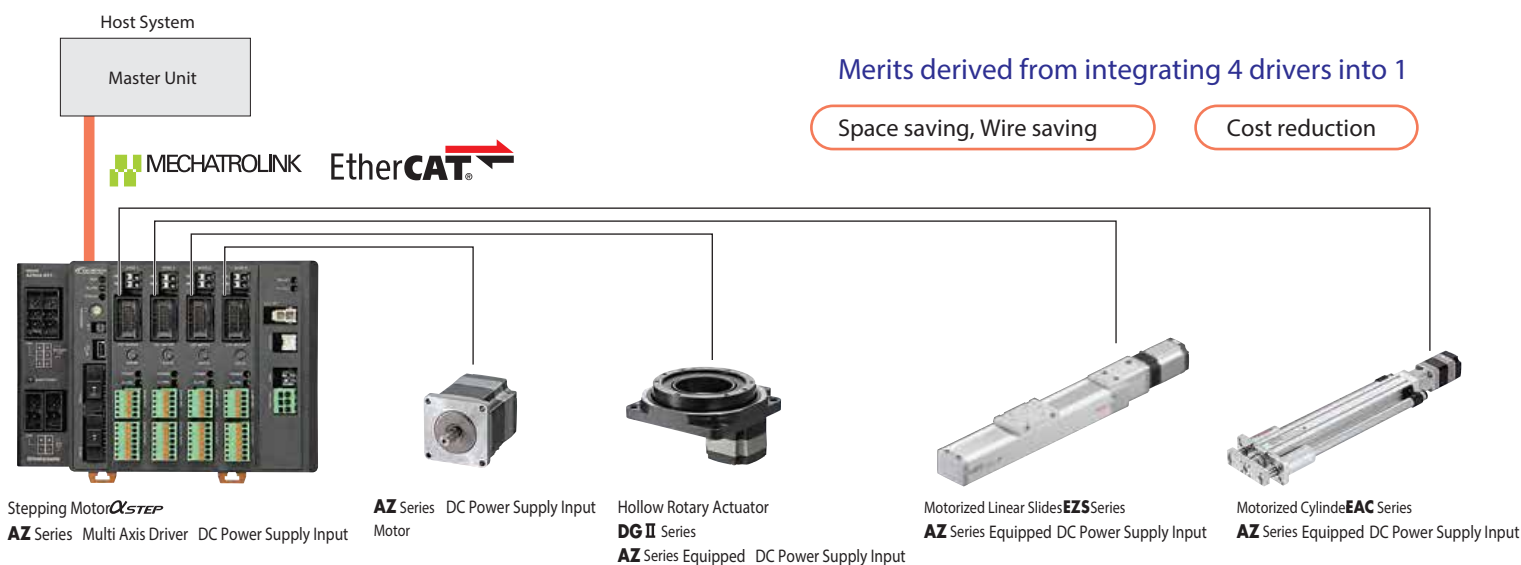
● SCARA Robot



● Parallel Link Robot

## System Configuration

Multi axis driver that supports MECHATROLINK III and EtherCAT Drive Profile. The driver can be connected to a DC power supply motor of the AZ Series. We provide the drivers to which 2, 3, or 4 axial connectors can be connected.



● The above motors and motorized actuators connected to the stepping motor are representative examples.

### ● ESI File

We provide an ESI file to allow you to use EtherCAT-compatible products more easily. The ESI file can be downloaded from the Oriental Motor website. Contact OMRON Corporation for connection with the PLCs made by the company. An EtherCAT connection guide is available.



Scan Or Click  
to  
Website



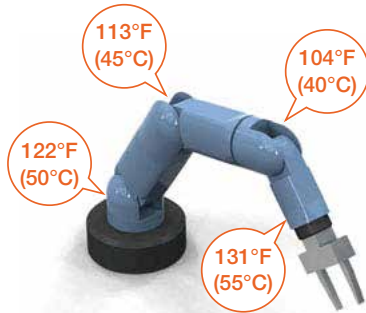
# Technical Specifications

## Features

### Motor Status Monitoring and Collection

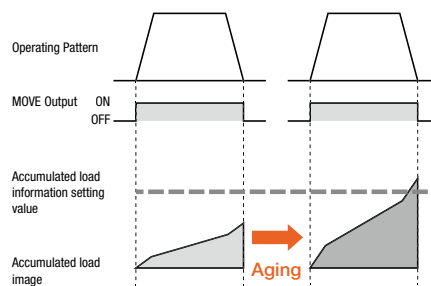
#### Motor Temperature Monitor

Even if the robot is covered by a case, real time temperature feedback and monitoring is possible.



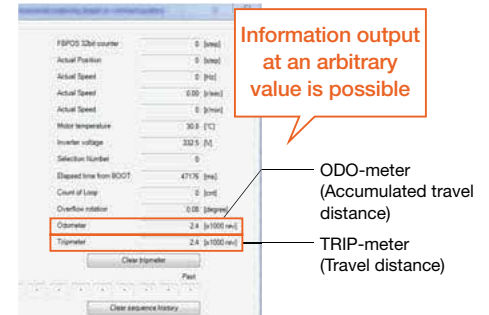
#### Accumulated Load Monitor

In addition to monitoring the instantaneous load factor, the load factor area for a single motor operating pattern can be understood and detected as a value, making it possible to understand long-term load increases as a result of deterioration over time.



#### ODO/TRIP Monitor

The accumulated number of rotations can be monitored, just like the instrumentation on a car. An information signal can be output when a set threshold has been exceeded. This can be used for maintenance and other purposes.



## Operation and Setup

### Supports Multi-Axis Interpolated Operation

Interpolated operation is possible by combining pulse input type drivers or various FA network compatible multi-axis drivers.

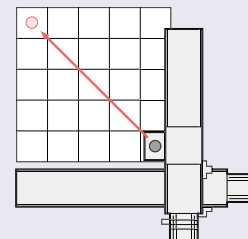


Network Compatible  
Multi-Axis Driver

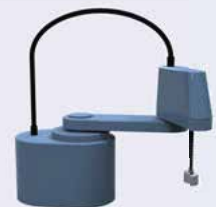
\*Only DC power supply input type products



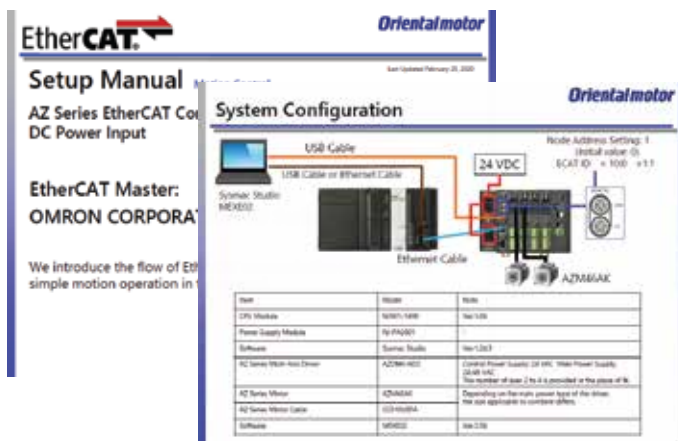
#### Interpolation Operation



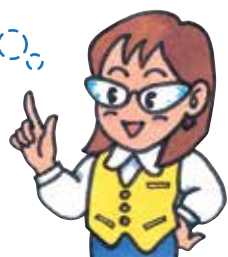
Multi Axis robot



SCARA robot



We provide the setup manuals between the AZ Series and certain PLCs!



We also support other types of network communication  
Please contact us for more information

We provide a full range of services to assist our customers, from consideration of a purchase through to aftersales service.

---



#### **Customer Support Centre**

Dedicated staff provide answers to various questions and advice regarding selection and usage of a motor, technical problems, etc via E-mail, the phone or Live Chat.



#### **Field Service**

Dedicated service engineers will visit you when assistance is required on the usage of our products. Please feel free to contact the your nearest sales offices.



#### **Inspection and Repair**

Oriental Motor offers free inspection services. Feel free to contact us if you have encountered any problems with or damage to Oriental Motor products. If repair is required, we will advise on the applicable charges. Kindly note that free repair is available if products are used in accordance with the warranty conditions.



#### **Sizing Selection Service**

We provide motor selection services, such as calculation of torque, to assist our customers in selecting the right motor.



#### **Technical Seminars / Webinars**

Dedicated trainers will go through from the basic motor knowledge to the applied technology and selection of the right motor. In addition, on-site seminars are also available.

You can register for our seminars from our Website.

---

#### **ORIENTAL MOTOR ASIA PACIFIC PTE. LTD.**

2 Kakit Bukit Ave 1 #05-06  
Singapore 417938  
TEL: +65-6745-7344 FAX: +65-6745-9405  
<http://www.orientalmotor.com.sg/>

#### **ORIENTAL MOTOR (THAILAND) CO., LTD.**

**Headquarters & Bangkok Office**  
63 Athenee Tower, 6th Floor Unit 603, Wireless Rd,  
Lumpini, Pathumwan, Bangkok 10330, Thailand  
TEL: +66-2-251-1871 FAX: +66-2-251-1872  
<http://www.orientalmotor.com.th/>

#### **ORIENTAL MOTOR (INDIA) PVT. LTD.**

No.810, 8th Floor, Prestige Meridian-1 No.29,  
M.G.Road, Bangalore, 560001, India  
TEL: +91-80-41125586 FAX: +91-80-41125588  
<http://www.orientalmotor.co.in/>

---

#### **ORIENTAL MOTOR (MALAYSIA) SDN. BHD.**

##### **Headquarters & Kuala Lumpur Office**

A-13-1, North Point Offices, Mid Valley City,  
No.1 Medan Syed Putra Utara 59200  
Kuala Lumpur, Malaysia  
TEL: +60-3-22875778 FAX: +60-3-22875528  
<http://www.orientalmotor.com.my>

##### **Penang Office**

1-4-14 Krystal Point II, Lebuhr Bukit Kecil 6, Bayan Lepas,  
11900 Penang, Malaysia  
TEL: +60-4-6423788 FAX: +60-4-6425788  
<http://www.orientalmotor.com.my>